

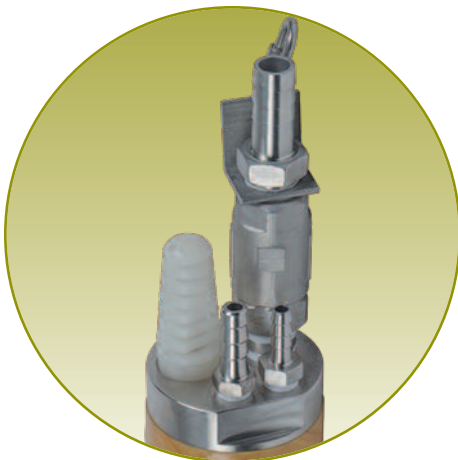
Total Fluids Recovery Pump

Geotech AR4 4" Auto-Reclaimer

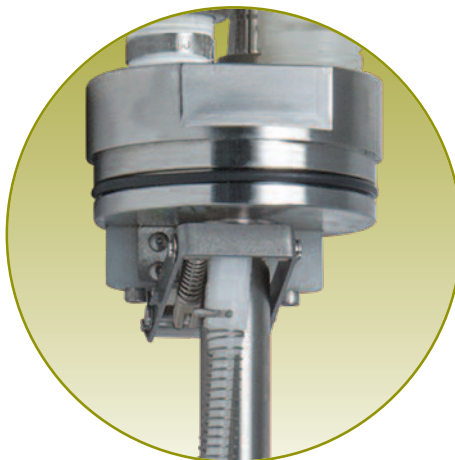
The AR4 is designed to pump floating hydrocarbons, leachate, and condensate in total fluids applications. The AR4 is operated automatically, and needs no controller. Everything needed to operate the system is built into the pump. The design withstands the harshest and most corrosive environments such as landfills or mines.

FEATURES

- Intrinsically safe design and approved for hazardous environments
- Fits 4" or larger diameter wells
- Ability to pump from 250' below ground
- Can pump particles up to 1/8" diameter
- Consistently pumps fluids as light as 0.70 SpG reliably
- New adjustment-free valve mechanism – no magnets
- Improved float design for maximum buoyancy and chemical compatibility
- Optimal working pressures as low as 1 psi above head pressure
- Standard light-weight composite housing, corrosive resistant 316 stainless steel and PVDF parts for less maintenance
- Fast and simple disassembly for easy maintenance



Pump Head



Pump Valve



Composite
Housing



Stainless
Steel
Housing

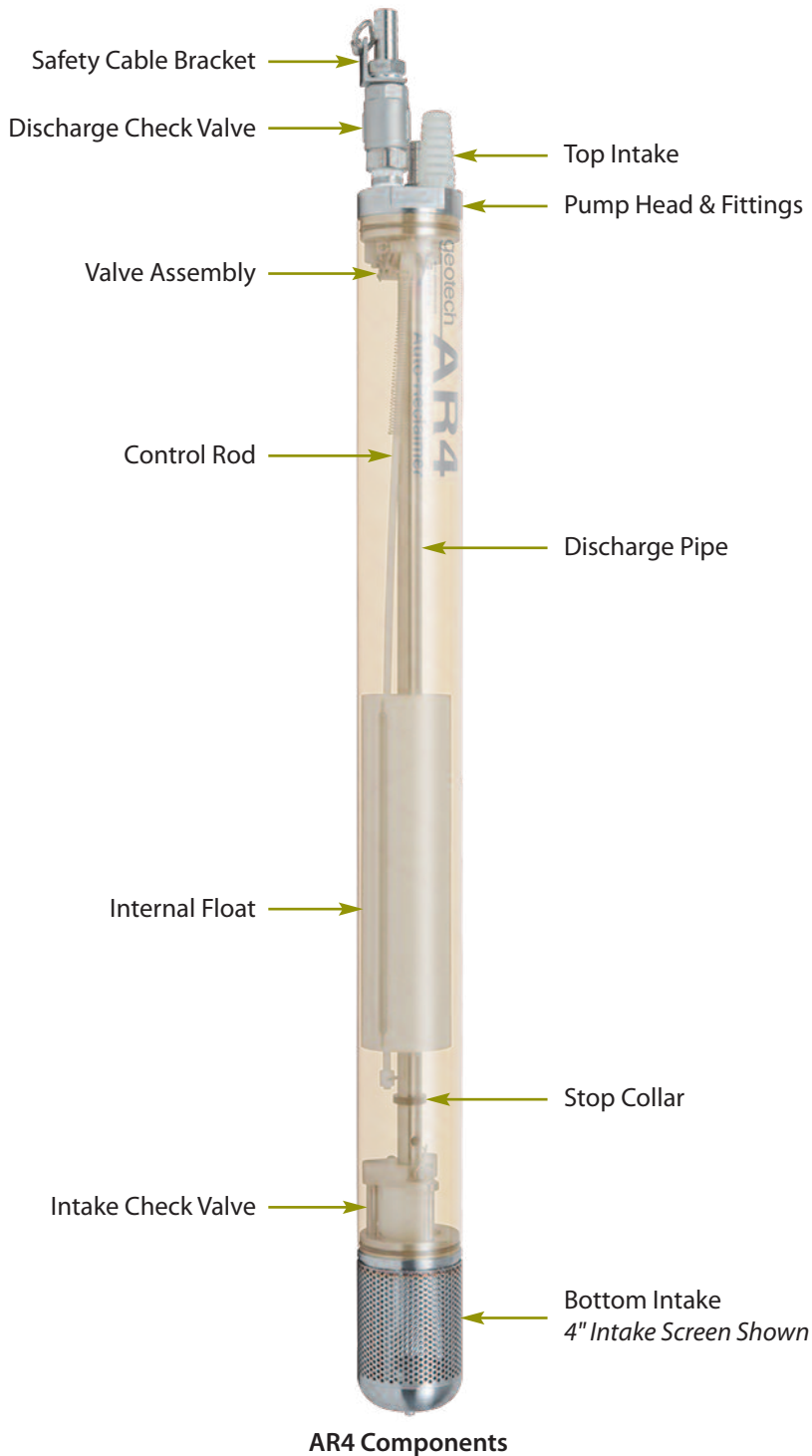
ENTRE EM CONTATO COM A GEOESFERA

(11) 2026 3824 - 2032 2782 - 3205 4384

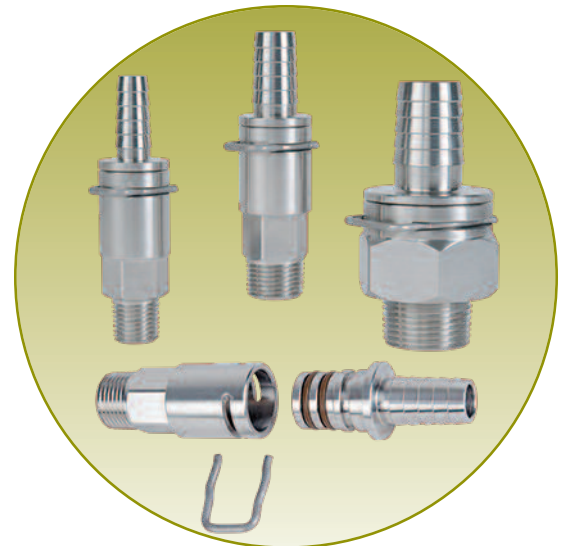
www.geoesfera.com.br - vendas@geoesfera.com.br

Total Fluids Recovery Pump

Geotech AR4 4" Auto-Reclaimer



Top Intake



Optional Quick-Connect Fittings

ENTRE EM CONTATO COM A GEOESFERA

(11) 2026 3824 - 2032 2782 - 3205 4384

www.geoesfera.com.br - vendas@geoesfera.com.br

Total Fluids Recovery Pump

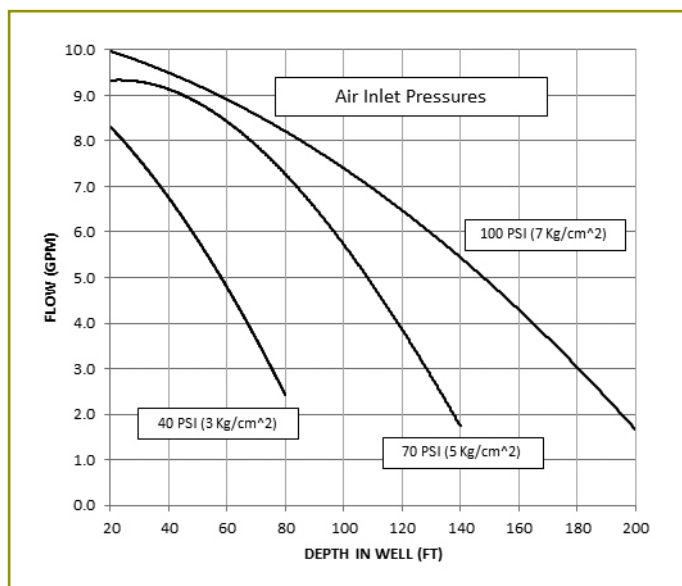
Geotech AR4 4" Auto-Reclaimer

SPECIFICATIONS

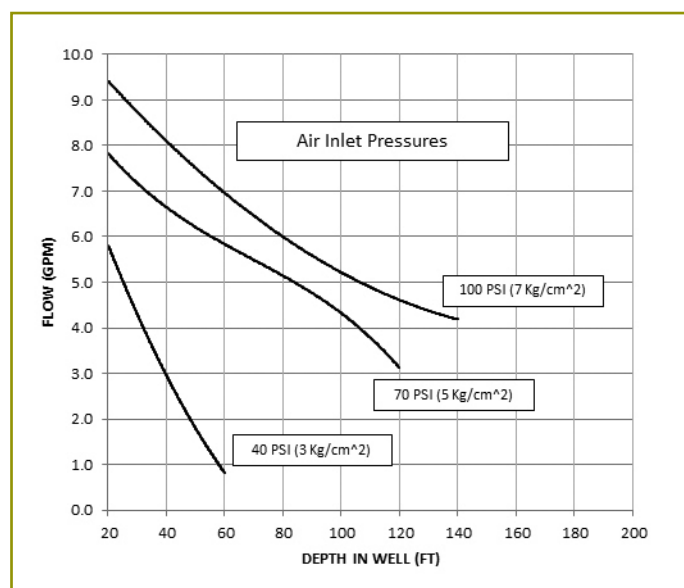
| | SHORT | LONG | EXT |
|-----------------------------------|---|----------------------|----------------------|
| Outside Diameter: | 3.5" (8.9 cm) | | |
| Lengths Up To: | 48" (122 cm) | 60" (152 cm) | 72" (183 cm) |
| Weight: | 13.5 lbs. (6 kg) | 15.6 lbs. (7 kg) | 17.7 lbs. (8 kg) |
| Min. Activation Level: | 35" (89 cm) | 47" (119 cm) | 59" (150 cm) |
| Operating Pressure Range: | 10-120 psi (0.7-8.5 kg/cm ²) | | |
| Max. Operating Temp: | 220°F (104°C) | | |
| Fluid Volume/Cycle*: | .7 gal. (2.6 liter) | 1.0 gal. (3.8 liter) | 1.5 gal. (5.6 liter) |
| Max. Flow Rate**: | 8.5 gpm (32 lpm) | | |
| Standard Fittings: | SS Barb | | |
| Fluid Discharge | ¾" x ¾" MPT | | |
| Air Supply | ⅜" x ⅜" MPT | | |
| Air Exhaust | ½" x ⅜" MPT | | |
| Materials of Construction: | Includes: SS316, FRP, FPM, PVDF, HDPE, PTFE, Viton® | | |

*Specific gravity and viscosities will alter specifications

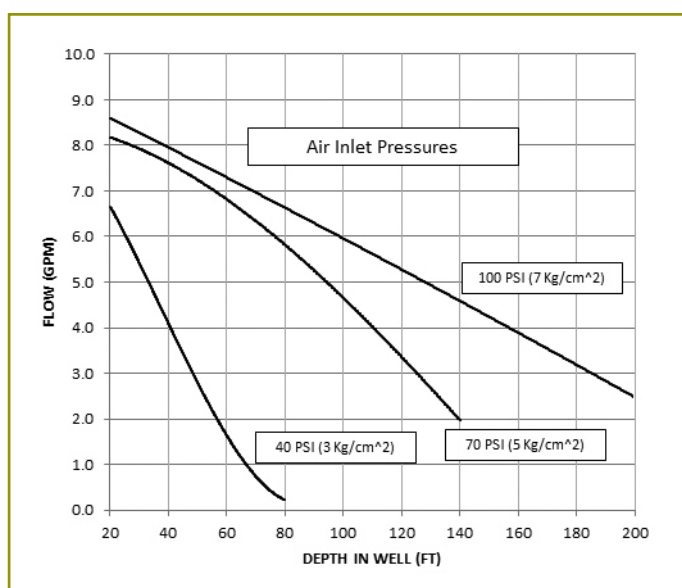
**Flow rates will vary with site conditions



AR4 Short, Bottom Inlet
10' (3m) Submergence, ¾" (19mm) ID Hose



AR4 Long, Bottom Inlet
10' (3m) Submergence, ¾" (19mm) ID Hose



AR4 Extended, Bottom Inlet
10' (3m) Submergence, ¾" (19mm) ID Hose

ENTRE EM CONTATO COM A GEOESFERA

(11) 2026 3824 - 2032 2782 - 3205 4384

www.geoesfera.com.br - vendas@geoesfera.com.br